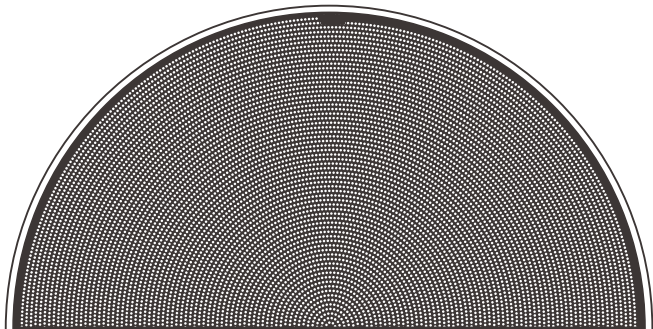


Mini Halo One | small but smart

TWS/ Bluetooth Speaker

User Manual



Mini Halo One | small but smart

TWS/ Bluetooth Speaker

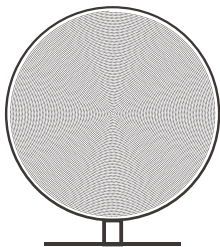
Thank you for purchasing Gingko Mini Halo One TWS Bluetooth Speaker. Please follow this manual to achieve your best experience of this beautifully designed object for you.

Please keep this manual for future reference.





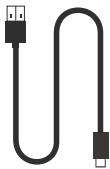
Accessories



A



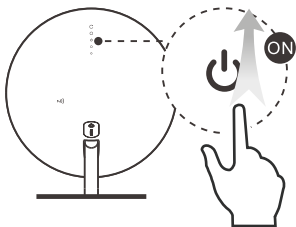
B



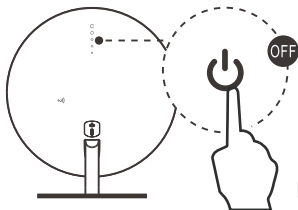
C



Power On/ Off



Slide up / down to turn on

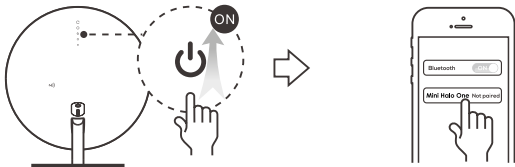


Long touch to turn off

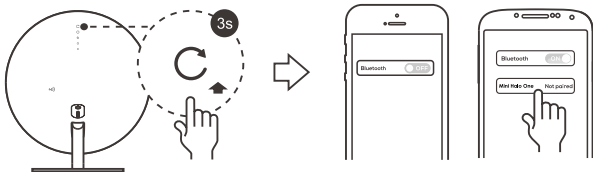


Bluetooth Connection

When the speaker is turned on, you can find "Mini Halo One" in the bluetooth list on your device and touch to connect it.



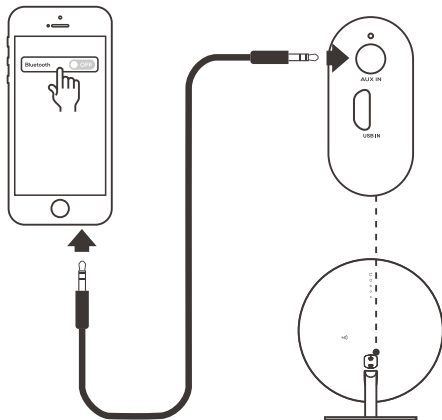
If 'Mini Halo One' is not found on your device, press the reset icon for about 3S to reset bluetooth, or turn off and turn back on the Bluetooth function on your device, then search on your device again and find "Mini Halo One" to pair it.





Audio AUX connection

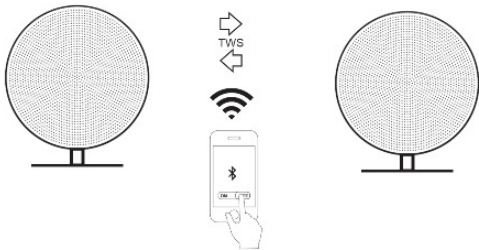
Please note: the AUX cable is not included



TWS Mode

At TWS mode (true wireless stereo), you can pair up two speakers to have a great stereo sound.

1. TWS mode is only available when you bought two Mini Halo One Speakers.
2. Turn on both speakers.
3. Long press "TWS" on one of the speakers until you hear a double tone "Dongdong".
4. If successfully paired, a single tone "Di" will be played. Then a quick blue flashing light indicates the main speaker and the vice speaker will flash twice every two seconds.
5. Follow the bluetooth pairing instruction as above to pair up your bluetooth device and enjoy your music in stereo mode.
6. When both speakers turned off and turned back on again, they will reconnect automatically. If they do not, repeat steps above to set up again





USB Charging Adapter Guide

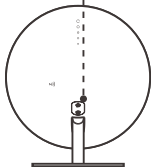
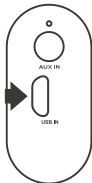


LED

This end connects to any USB adapter like our phone charger or computer USB port



This end connects to mini USB charging port on the Halo One

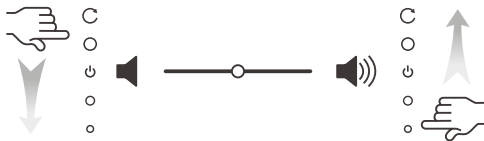
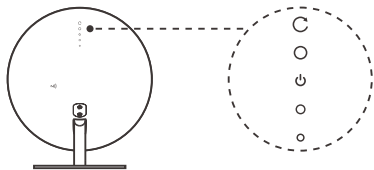


LED





Volume Adjustment





This product is covered under one year manufacturer warranty starting from the date of purchase. Within the warranty period, any repair service or components replacement will be provided for free.

Warranty does not apply to the following circumstances:

1. Product failure due to improper use, misuse, drops, abuse, alteration, faulty installation, power line surge or modification
2. Product failure due to acts of nature such as natural disaster, fire, flood, or casualty.



1. Avoid this device from accidental drops, physical shocks, and any long exposure to the sun or rain.
2. Keep this device in a clean/dry environment of 0°C –40°C in temperature. The ambient humidity of the device should not exceed 75% so as to avoid corrosion damage. Do not approach the device to a heat source such as fire.
3. Never dispose of any electrical or electronic waste in general circulation. Collect and dispose of such waste safely and separately.

Failure to follow these safety instructions may result in unexpected damage of this device. The company is not responsible to any result caused by violation of safety instructions above.



Specifications

- product Name: Mini Halo One Speaker
- model Code: G007
- powered by in-built rechargeable battery
- input: DC5V - 500mA
- touch control operation
- output: 5W RMS
- material: ABS+Aluminium/Metal
- frequency response: 100Hz - 18KHz
- product size: 140x100x160 mm



Natural - technology - lifestyle



Halo One | better in one

www.ging-ko.co.uk

Copyright © Gingko Electronics Ltd
All rights reserved

Designed in England by Gingko, Made in China

Printed in China